

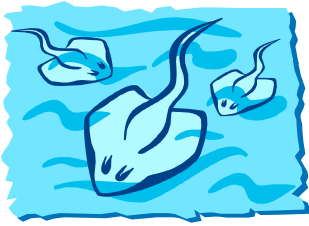


DEEP SLEEP RULES OF CONDUCT

All groups must read these rules prior to attending their overnight. Any groups not following these rules may be asked to leave the Deep Sleep. Group leaders are responsible for making sure **all** Chaperones have a copy of these rules with them at the overnight. Chaperones are responsible for making sure that children in their group follow these rules.

- Adult Chaperones are responsible for their behavior and the behavior of the children in their group. Guests found conducting inappropriate behavior that could create an unsafe environment for other guests, staff or animals will be asked to leave the Aquarium.
- **No running!**
- All children must be accompanied by an adult! At least one chaperone must stay with your campers at all times!
- Please listen to the staff. We are here to ensure that you and your group have a great time, but we cannot do this if you do not follow our staff's instructions.
- Lights out is around 11:15pm. While you're bunking down with our aquatic friends, **do not set up your gear in front of any doors or elevators**. Staff will be rotating through the Aquarium during set up and **YOU WILL BE ASKED TO MOVE** if you are blocking doors or elevators! Also remember to keep an aisle free for people to get to the bathrooms...you don't want your toes stepped on in the middle of the night!!

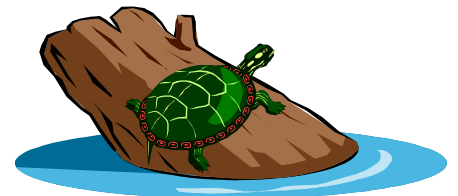
- Flashlights are permitted to help you get to the bathrooms in the middle of the night. However, we ask that you DO NOT shine your flashlights into the exhibits.
- In the morning, **wake up call is at 7am**. For those of you who will be sleeping in Zone D (Shark Realm and Jules Verne Gallery), your first task will be to pack up your gear and take it to your vehicles. **We need that exhibit cleared out by 7:30am**, so our staff can get in there to start feeding those animals and cleaning the exhibits. After you're all packed up and your gear is stored, you're invited to head to breakfast.



pack up when you're done eating.

- Everyone sleeping in Zones A and C will be asked to head to breakfast first. **Leave your gear where it is**, head to breakfast and we'll have you

- Please remember that **everyone's gear must be out of the Aquarium by 9:00 am**. We'll have the shuttle running to help you get to your cars in the garage. Then, you'll have more free time to explore the aquarium in the morning, and the gift shop will open at 8:15am. At 9:30, we'll be opening the hippo, seal and penguin exhibits.



- The Deep Sleep is an alcohol and drug-free event. Guests found drinking or in the possession of alcohol or drugs will be asked to leave the event.
- For the safety of our animals and the health of our guests, the Aquarium is a **smoke-free** facility. In addition, the Deep Sleep is a lock-down, and all exterior doors will be locked after 7pm. Guests are not permitted to prop open doors so that they can leave the building to smoke. Smoking is especially not permitted outside by the Seal and Penguin exhibits. Please contact Deep Sleep staff if you have questions regarding this policy.